



## Unlock your full potential with an integrated IT solution combining business and employee requirements.

**Employees today want a smart working environment that provides all the support they need to do their job. That's why Swisscom has developed a digital workplace, incorporating everything that workers need. Securely managed and monitored around the clock so that you can work efficiently and with complete peace of mind.**

Use the entire suite of Microsoft 365 apps across all your devices and enjoy networked working in Teams. Our modular service components keep you flexible and let you scale your hybrid cloud environment the way you want.

### Your benefits with SME IT Solution

#### Increase productivity

Anywhere on any device. With Swisscom's cutting-edge workplaces, your employees can unlock their full potential. It's never been easier to share knowledge, optimise processes, access data and communicate efficiently.



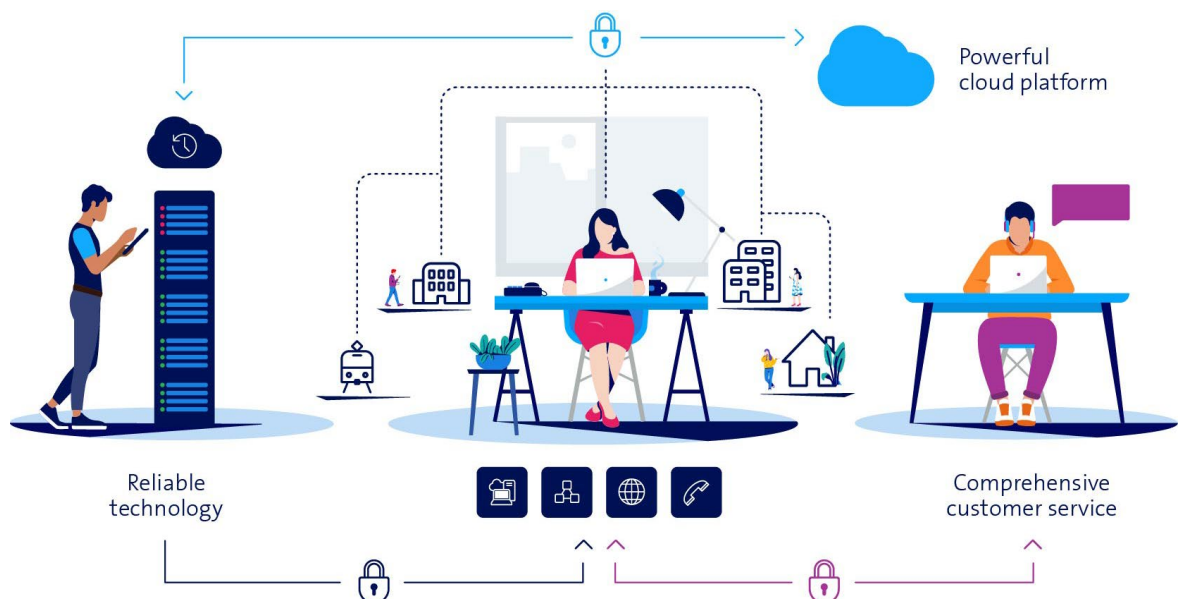
#### Increase security

Press the Power button and start work – we'll take care of the rest. Security is our top priority. Perfectly coordinated security modules and a fully managed environment are key elements of our solution.



#### Reduce operational effort

We keep things running smoothly in the background so you can continue working with complete peace of mind. Together with our partner network, we continuously develop your IT workplace and support you on your digital transformation journey.



The SME IT Solution combines numerous Swisscom solution modules, enhanced by the Business Workplace Services module. Detailed information about the other modules is available here: [Business Internet Services](#), [Business Communication Services](#), [Business Network Solutions](#).



## Facts and figures

### Modern cloud-based workplaces



- **Modern hardware packages** (laptops, PCs, monitors, docking stations, etc.) as a subscription for your workplace or for device integration (including Macs)
- **Microsoft 365 apps** for productivity, communication and collaboration
- Seamless **integration of business applications** into the working environment
- Save, share and manage data on **SharePoint** and **OneDrive**
- Independent working thanks to **secure remote access** to data and applications
- Effective **security mechanisms** protect against hacker attacks and malware
- **Managed corporate network including firewall** at all sites
- Innovative **telephony solutions** and failsafe **high-performance Internet**

### Secure IT environment



- Provision of stable, high-performance **virtual server farms** on Microsoft Azure (Switzerland) or in Swisscom data centers (optional) as well as the connection of your own resources
- Always up to date with the regular import of **service packs, updates and security patches**
- **Proactive monitoring** of the IT infrastructure and intervention where necessary
- **Encrypted backups** with variable storage periods at Swisscom
- **Device management** and control of security guidelines
- Centrally controlled **access management** to protect critical infrastructure
- **Certified data centers**: Swisscom (ISO 9001, 14001, 20000-1, 27001); [Microsoft Azure Switzerland](#) (ISO 20000-1, ISO 22301, ISO 27017, ISO 9001, CIS Benchmarks, CSA STAR Certification)

### Comprehensive customer service



- **Remote support for end users or power users** from Swisscom or a certified Swisscom IT partner company – included in monthly price
- **Local customer care** from a locally based IT partner company
- **Flexible Service Levels** as required
- Assumption of **supplier and licence management**
- **Central business platform** for managing tickets, users, subscriptions and services
- **E-learning platform** for employee upskilling with over 2,000 learning videos, webinars and tips & tricks for workplace efficiency and Microsoft 365
- Ongoing development of Swisscom technologies and **cross-portfolio innovation**

The details in this document do not constitute a binding offer. Subject to modification without notice.

Swisscom (Switzerland) Ltd Enterprise Customers, P.O. Box, CH-3050 Bern, Telephone 0800 800 900, [swisscom.ch/enterprise](http://swisscom.ch/enterprise)

**swisscom**



No need for your own servers with the energy-efficient SME IT Solution – reducing your carbon footprint and your energy consumption.