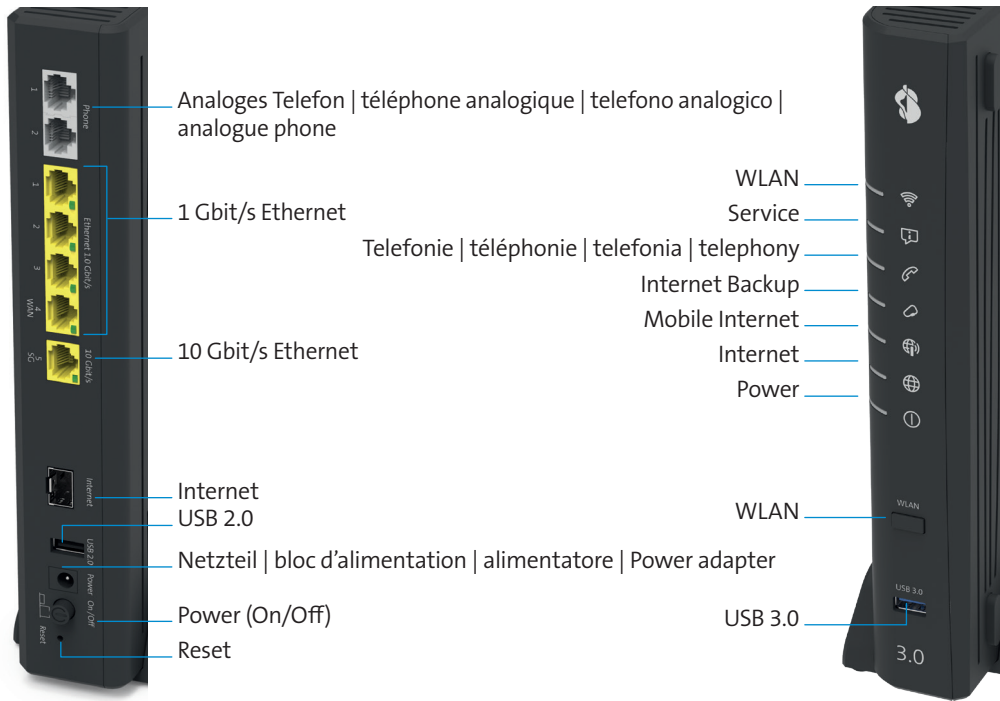


Anschlüsse, Tasten und LEDs | ports, touches et voyants LEDs |
 porte, tasti e LEDs | ports, buttons and LEDs



Mehr Infos (z.B. LED-Verhalten) finden Sie in der ausführlichen Anleitung:
 Vous trouverez de plus amples informations (p. ex. sur le comportement des LED) dans le manuel détaillé:
 Ulteriori informazioni (ad es. legenda spie LED) si trovano nel manuale dettagliato:
 More information (e.g. the LED guide) can be found in the detailed instructions:

www.swisscom.ch/cb3-manual



Swisscom (Schweiz) AG
 Postfach
 3050 Bern
www.swisscom.ch/kmu
 0800 055 055

Swisscom (Schweiz) AG
 Enterprise Customers
 3050 Bern
www.swisscom.ch/enterprise
 0800 800 900

B2B-CBS-WOV-CNY 11049318 02/26



Centro Business 3.0

Anleitung | instructions | manuale | instructions:



Hinweis nur für | note seulement pour | nota solo per | note only for
XGS-PON Enterprise Connect Kunden | clients | clienti | customers

- > Öffnen Sie das | ouvrez le | aprire il | open the Business-Center: <https://extranet.swisscom.ch>
- > EC Dashboard: Agreement auswählen | sélectionner le Agreement | selezionare l'Agreement | choose the Agreement
- > Standort auswählen | sélectionner le site | selezionare il sedi | select a site
- > Centro Business > Pairing | Couplage | Accoppiamento | Pairing
- > Pairing erstellen | nouveau couplage | nuovo accoppiamento | Add new pairing
- > +
- > MAC Address eingeben | saisir | inserire | enter > ✓
- > Speichern | sauvegarder | salva | confirm
- > Checkout 📄



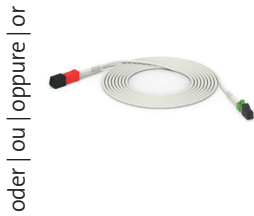
swisscom

Router einrichten | installer le routeur | installare il router | router setup

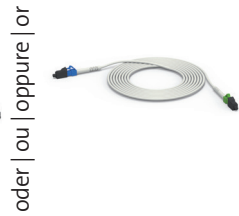
1 a)
5G Receiver



1 b)
XGS-PON



1 c)
Fiber



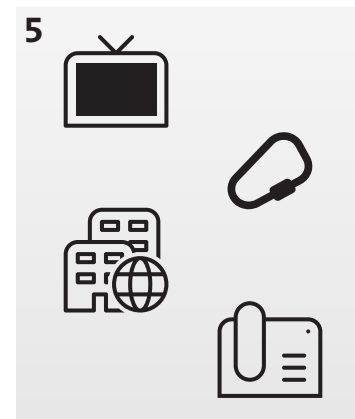
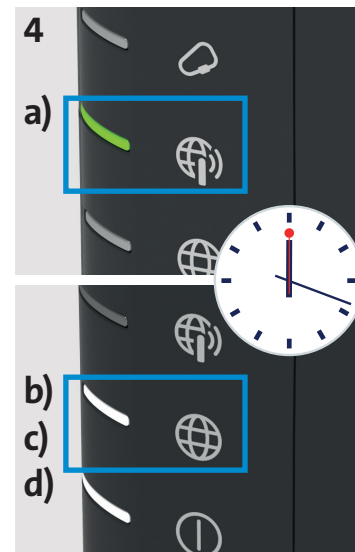
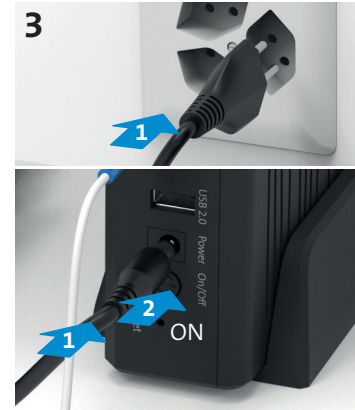
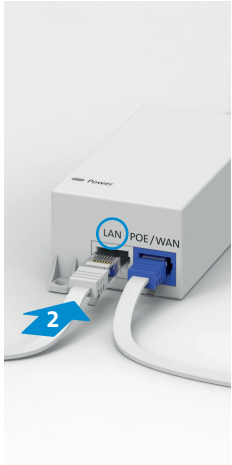
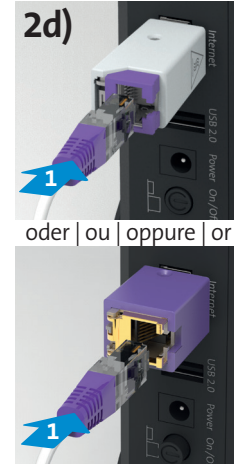
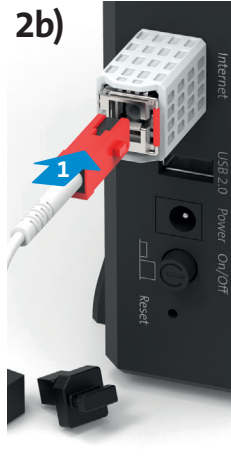
1 d)
G.fast / VDSL



oder | ou | oppure | or

oder | ou | oppure | or

oder | ou | oppure | or



Stellen Sie den Router freistehend auf.
Placez le routeur de façon isolée.
Posizionare il router in uno spazio libero.
Make sure the router freestanding.

Der Router kann während der Installation mehrmals neu starten. Warten Sie bis die
a): LED konstant grün leuchtet.
b) c) d): LED konstant weiss leuchtet.
Le routeur peut redémarrer plusieurs fois pendant l'installation. Patientez jusqu'à ce que
a): le voyant LED s'allume en vert de façon continue.
b) c) d): le voyant LED s'allume en blanc de façon continue.

Durante l'installazione, il router può riavviarsi più volte. Attendere che
a): il LED diventa verde.
b) c) d): il LED e diventa bianco.
The router may reboot several times during installation. Wait for
a): the LED to light up green permanently.
b) c) d): the LED to light up white permanently.

Für die Inbetriebnahme weiterer Services und Produkte (zum Beispiel TV, Telefonie, managed LAN) verwenden Sie die jeweiligen Anleitungen.

Pour la mise en service d'autres services et produits (p. ex. TV, téléphonie, LAN géré), veuillez consulter les instructions respectives.

Per la messa in funzione di altri servizi e prodotti (per esempio TV, telefonia, managed LAN), utilizzare le istruzioni corrispondenti.

For the commissioning of other services and products (e.g. TV, telephony, managed LAN), use the respective instructions.