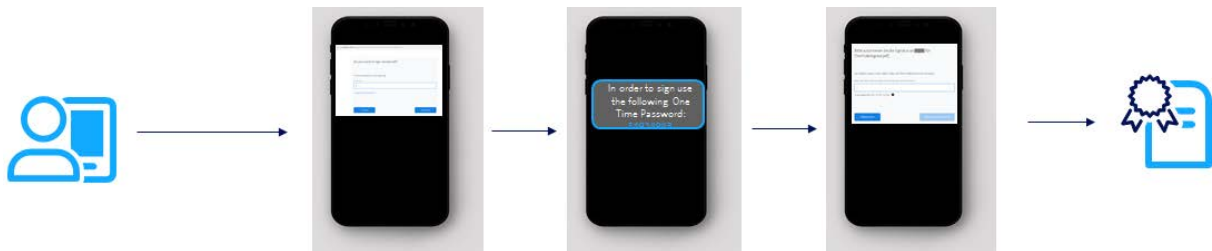


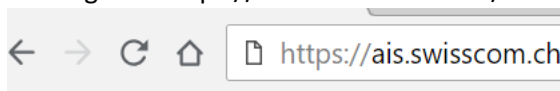
## Information on the expression of intent using a password and a one-time password (SMS) for Swisscom's All-in Signing Service

If you submit the declaration of intent for the signature and do not have a Mobile ID (with Swiss SIM card) in use, you will first be forwarded to an input screen where you have to enter the password for the signature. You will then receive a one-time password by SMS and must enter it on a second screen to enter this password.



You should always make sure that these input screens are also generated by the Swisscom All-in Signing Service. There are two ways in which the subscriber application can display this screen:

- a) The input screen is displayed in a separate window. Here you will see the published URL starting with [https://ais-sas.swisscom.ch/...](https://ais-sas.swisscom.ch/) and the corresponding certificate.

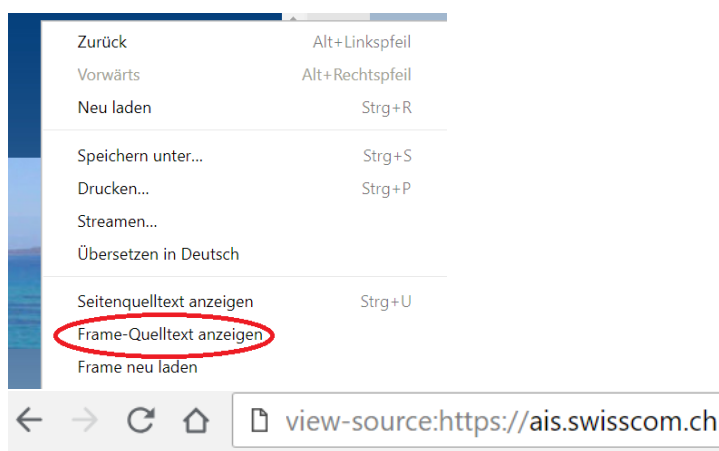


-----OR-----

- b) The input screen is displayed as part of the screen of the participant application, i.e. you are not explicitly forwarded to Swisscom and therefore see the address starting with [https://ais-sas.swisscom.ch/ ...](https://ais-sas.swisscom.ch/) not in the address bar of the browser.

In this case, right-click on the field by entering the password for the signature release. A pop-up menu opens and you select the following menu item depending on the browser you are using:

- **Chrome Browser:** "Show frame source text". A new window will open and you will see the name of the publishing page in the header frame.

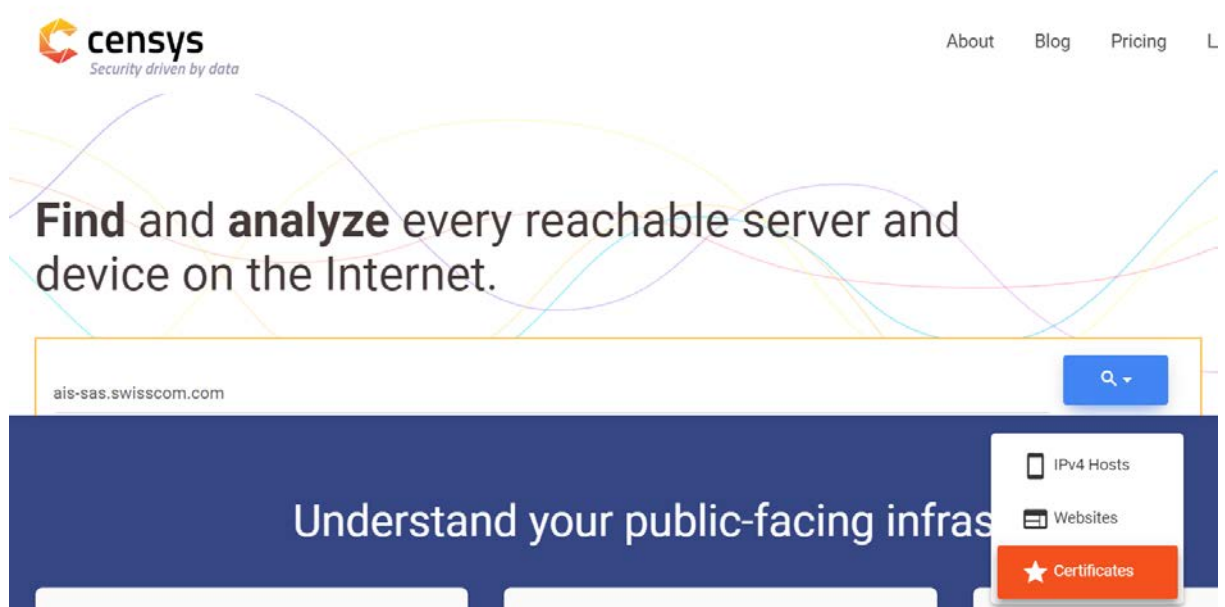


- **Mozilla Firefox:** "This frame - source text". Same display as for Chrome, in the header frame you see the name of the publishing page.

- **Internet Explorer:** Show properties. A small popup window opens and displays the name of the publishing page under "Address".

Verification of the certificate:

To check the certificate, use the options of your browser (some of which can also be found in the developer options). Or enter the address above (ais-sas.swisscom.com) in the online tools available for this purpose, such as <https://censys.io>. You can also do this directly with the link <https://censys.io/certificates?q=ais-sas.swisscom.com>:



The certificate displayed here should be generated by the following issuer:

Issuer DN: C=ch, O=Swisscom, OU=Digital Certificate Services, CN=Swisscom Smaragd CA 2

This Issuer DN (click on the Issuer DN link) should in turn be created by the following publisher:

Root-CA: C=ch, O=Swisscom, OU=Digital Certificate Services, CN=Swisscom Root CA 2

**Important:**

**The page in the address bar should always start with [https://ais.swisscom.ch/...](https://ais.swisscom.ch/)**

**Or view-source:[https://ais.swisscom.ch/.....](https://ais.swisscom.ch/) !**